



world  
class  
winches

## Hydraulic Planetary Gear Winches

# H100P

Grooved for 16 mm rope  
Type No 73.09-010  
Type No 73.09-014

### 10 TONNES WINCH



#### Pulling force

- bottom rope layer	10.0 tonnes	22 500 Lbs
- top rope layer	7.0 tonnes	15 700 Lbs

#### Rope speed

- bottom rope layer	9.0 m/min	30 ft/min
- top rope layer	13.0 m/min	43 ft/min

#### Rope speed in high auto 2-speed

- bottom rope layer	n/a	n/a
- top rope layer	n/a	n/a

#### Max oil pressure

210 bar	3000 psi
---------	----------

#### Max oil flow

60 l/min	16 gal/min
----------	------------

#### Drum diameter

216 mm	8.50 inch
--------	-----------

#### Rope diameter

16 mm	0.63 inch
-------	-----------

(Acc. to DIN 14584, MBL  $\geq$  197 kN)

#### Rope length

60 m	197 ft
------	--------

#### Numbers of layers

4	4
---	---

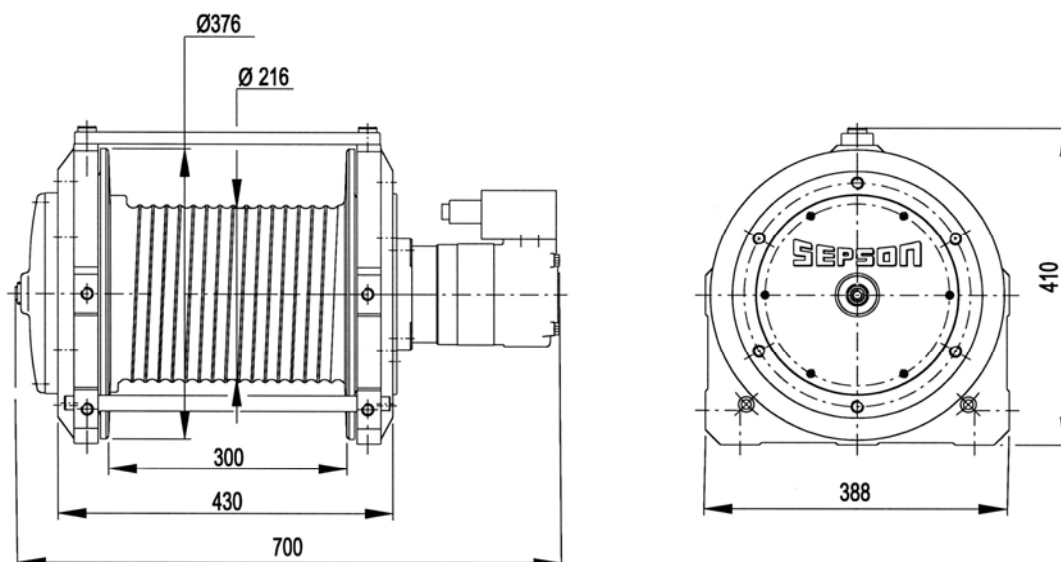
#### Winch weight

175 kg	393 Lbs
--------	---------

#### Rope weight

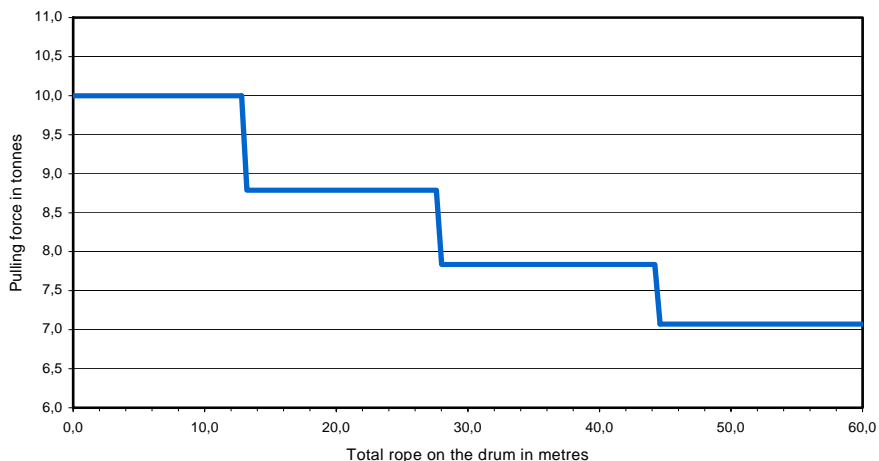
66 kg	148 Lbs
-------	---------

### Dimensional drawing (dimensions in mm)



### Pulling force over the rope length

	Pulling force (tonnes)	Rope speed (m/min)	Total Rope on the drum (m)
1st	10,0	9,0	13,0
2nd	8,8	10,5	27,8
3rd	7,8	11,5	44,4
4th	7,0	13,0	62,8

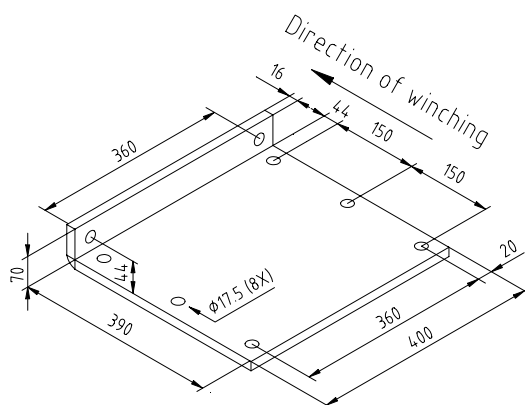


### Mounting instructions

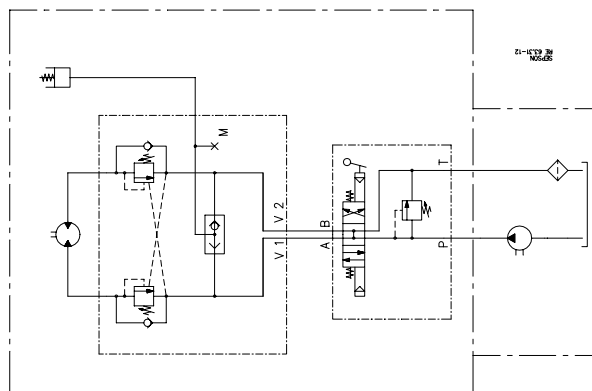
The winch should be mounted on a 16 mm steel mounting plate fixed to the vehicle.

The winch must be fitted to the mounting plate with 8 bolts M6S M16x40 (hot galvanized) minimum quality 8.8.

Tightening torque 210 Nm (21 kpm) when oiled.



### Hydraulic installation



#### Declaration of Conformity

According to the Machine Directive 98/37/EC, Annex IIA

**Sepson AB, P.O. Box 172, SE-780 50 Vansbro, Sweden** declare under our sole responsibility that:

The winch type 73.09 with serial numbers 110-770

- are manufactured according to the Machine Directive 98/37/EC
- are manufactured according to following harmonized standards – EN 292-1 and 2

Vansbro December 9, 2005. **Sepson AB** Ulf Jons Designer

May 2006